

Niue Ocean Wide Annual Report 2024



VALUING NIUE'S OCEAN
AND ECOSYSTEMS



List of Acronyms

BNA - Blue Nature Alliance	NOW - Niue Ocean Wide
CBD - Convention on Biological Diversity	NTO - Niue Tourism Office
CI - Conservation International	NZ - New Zealand
COC - Chamber of Commerce	OCC - Ocean Conservation Commitment
COP - Conference of Parties	PADI - Professional Association of Diving Instructors
DAFF - Department of Agriculture, Forestry & Fisheries	PCRIC - Pacific Catastrophe Risk Insurance Company
EEZ - Exclusive Economic Zone	RMAC - Resource Management Advisory Committee
FY - Financial Year	SFS - Sustainable Financing Strategy
HMNZ(S) - Her Majesty's New Zealand (Ship)	SIDS - Small Island Developing State
HR - Human Resources	SOP - Standard Operating Procedure
KPI - Key Performance Indicator	SPC - Secretariat of the Pacific Community
MEEF - Management Effectiveness Evaluation Framework	SPREP - Secretariat of the Pacific Regional Environment Programme
MEL - Monitoring, Evaluation and Learning	UN - United Nations
MPA - Marine Protected Area	UNCBD - United Nations Convention on Biological Diversity
MRV - Monitoring, Reporting and Verification	UNFCCC - United Nations Framework Convention on Climate Change
MSP - Marine Spatial Plan/Planning	US/USD - United States/United States Dollar
NDC - Nationally Determined Contributions	
NGO - Non-Governmental Organization	
NGPS - National Geographic Pristine Seas	

Contents

1. NOW Trustees	4
Fakaalofa Lahi Atu	5
2. Meet the NOW Project Team	5
3. Introduction	6
4. 2023/2024 Impact	8
4.1 Establish and Strengthen Long Term Institutional Capability and Sustainable Financing	9
4.2 Awareness and Global Advocacy	15
4.3 Enhanced Monitoring, Enforcement and Management Capabilities	17
4.4 Sustainability, Climate Resilience, and Risk Reduction	20
4.5 Incremental Capability for Conservation and Sustainable Development	22
5. Priorities for 2025	26
Annex A - MRV	27



Meet our 1. NOW Trustees



Dalton Tagelagi (Hon)
Chair NOW Trustee

Hon. Tagelagi is Niue's first Prime Minister following the title change on 31 August 2024. In leadership since 2020, he has held key portfolios such as Foreign Affairs, Climate Change, and other Commercial Agencies. A Legislative Assembly member since 2008, he represents Alofi South. He launched the "Niue Ko Kaina" initiative to boost economic and cultural revitalization and chairs several national trusts, including the Niue Ocean Wide (NOW) Trust. A passionate sportsman, he has represented Niue internationally. His vision centers on global growth for Niue while preserving its heritage and strengthening community values.



Coral Pasisi
Vice-Chair NOW Trustee

Coral has over 25 years of experience in sustainable development, climate change, climate finance, and ocean conservation in the Pacific. She has served in senior roles at the Green Climate Fund, PIFS, and SPREP and is currently the Director of Climate Change at SPC. She is an Earth Scientist and Development Planner, and strongly advocates for traditional knowledge and practice as a daughter of Niue. Her most important role in life, is being a mother to Bailey and Reign Pasisi.



Mona AINU'u (Hon)
NOW Trustee

The Hon. AINU'u has served as Niue's Minister of Natural Resources since 2017 and is currently in her third term. She represents the Tuapa Village Constituency and holds portfolios in Agriculture, Forestry & Fisheries, Meteorological Services, and Environment. She also serves as Associate Minister for Climate Change, Ocean, BCN, Justice, and Tourism. Her legislative roles include Vice-Chairperson of the Public Accounts and Bills Committees. Regionally, she is a Pacific Climate Change Champion for Gender & Social Inclusion, advocating for sustainable development and environmental resilience across the Pacific.



Avi Rubin
NOW Trustee

Avraham Rubin (Avi) is a dedicated business man known for hospitality, accommodation, commercial fishing and fish processing. Since 2006, he has contributed significantly to the tourism industry and community. To date holding roles such as president of NCOC (Niue Chamber of Commerce), chair for TNL (Telecom Niue limited) and vice president for Tofia Niue. Beyond his professional work he is involved in traditional canoe fishing, he is also passionate about creating a better life on the island for all.



Gaylene Tasmania
NOW Trustee

Devoting over 30 years to serving the Niue Government, Gaylene began her career with the Department of Agriculture, Forestry, and Fisheries, steadily rising to the position of Deputy Director. Gaylene's dedication and expertise led her to become the Director of Community Affairs, and later, in 2014, the Director General of Social Services. Currently serving as the Deputy Secretary of Government, Gaylene continues to play a pivotal role in shaping Niue's future. Her passion for public service and her enduring contributions to the community are a testament to her remarkable career.



Etaena Poihega
NOW Trustee

Etaena Poihega, is from the village of Makefu, is Chairperson Council, deeply connected and actively involved in the Makefu Climate Justice advocacy Project, champions sustainability and gender equality, motivated by a desire to create a better future for the next generation, Ena represents the Village Councils in the NOW Trust, driving transformative change, fostering inclusive opportunities and championing sustainability initiatives that uplift and inspire the community. "Pete he uka e gahua kua lali ki ai, kia uku aki e ulu, ha ko e mena to puna e motu".



Fakaalofa Lahi Atu

As we kick off another year, we want to thank you whole heartedly for believing in us and sharing our journey through the Niue & Ocean Wide Trust and partnership. Whether you have sponsored Ocean Conservation Credit : Niue & Ocean Wide Project, made direct contributions to the NOW Trust, or just encouraged us to stay the course in protecting this incredible ocean space (Niue Moana Mahu) and the very special community and country who are its guardians, we thank you.

We are pleased to share with you our inaugural Annual Report of the NOW Trust and related efforts of the NOW Project. It builds on the Impact Stories and Annual Snapshot sent out late last year. It reports on the year (and a bit) since the NOW Trust was launched in September 2023 and is intended to show our progress. We would like you to know how much your contributions are appreciated, and how the commitments and contributions are being put to use, not just in Niue but on the world stage to help scale meaningful ocean protection, climate action and contributions and, support towards a future that is sustainable for everyone and resilient for Niuean's.

Kia monuina

2. Meet the NOW Project Team

NOW PROJECT ADVISORY TEAM



Coral Pasisi President, Tofia Niue
Avi Rubin Vice President, Tofia Niue
Dr. Josie Tamate Advisor to Minister of Natural Resources
Catherine Etuata Papani CEO, Niue Chamber of Commerce
Poi Okesene Director, Department Agriculture Forestry & Fisheries



Doreen Siataga Financial Secretary, Government of Niue
Micah Fuhiniu Viviani Director, Niue Tourism
Lagaiki Niu Lavini PAT Member
Richard Siataga GIS Expert, Department of Justice Lands & Survey

NOW PROJECT TEAM



Brendon Pasisi Director & Project Manager
Carmen Fuhiniu Finance & Administration Manager
JinNam Hopotua Communications & Technical Officer
Shanta Hekau Communications Manager & Local Grants Support Officer
Shiloh Pasisi Data, Monitoring & Reporting Manager
Inez Faitala Data, Monitoring, Reporting & Mentoring Advisor



3. Introduction

Niue is a small island developing state (SIDS), self-governing in free association with New Zealand (NZ) and is located in the South Pacific. Its large ocean real estate includes globally significant marine ecosystems like no other on Earth. As a SIDS, Niue has limited resources to undertake marine conservation and resilience efforts; however, through the combined effort of its government, local organizations and communities, Niue has made significant advancements in its commitments, policy development, innovative financing and actions to strengthen marine conservation and build a sustainable blue economy.

The Niue Ocean Wide (NOW) Project is Niue’s first public private partnership between the Government of Niue and the local Non-Governmental Organization (NGO) Tofia Niue. It was established to ensure collaborative and effective management and continuity of Niue’s marine protection efforts and resilient sustainability. A critical element of NOW’s Sustainable Financing Strategy is the establishment and capitalization of the NOW Trust, established through the same public private partnership that manages the NOW Project. Part of the development of the NOW Trust included the development of an innovative financing instrument, the Ocean Conservation Commitment (OCC). Developed by NOW and partners, the OCC is transparent instrument

that facilitates the exchange of sponsorship of NZD \$250 with a meaningful promise of assured protection of 1km² of ocean in Moana Mahu (large scale Marine Protected Area) for 20 years. This protection allows the accrual of the diverse value drivers of Moana Mahu, including increase in biodiversity and ecosystem health, climate resilience, sustainable development, education and livelihoods for Niuean people and security amongst many other things. By leveraging Ocean Conservation Commitments (OCCs), donations, grants and other funding streams from bilateral, corporate, philanthropic, and individual contributors, the NOW Trust is being able to implement a holistic solution that supports both the long term protection of Moana Mahu, and a broad range of actions in Niue related to conservation, socioeconomic development, resilience, and preservation of cultural values. Key investment pillars include:

- 1 Long term institutional capability and sustainable financing
- 2 Enhanced enforcement and management capabilities
- 3 Sustainability, climate resilience, and risk reduction
- 4 Incremental capability for conservation and sustainable development

The NOW Trust has made a commitment to undertake specific conservation, resilience, and sustainable development actions under these four investment areas. Similarly, the NOW Trust is committed to reporting on the efforts in a standardized format to People of Niue, Donors, OCC Sponsors and other NOW Trust Contributors.

Given the goal to minimize overhead and reporting efforts and maximize funds to support action in conservation, resilience building, and sustainable development, the NOW Trust has developed this Annual Report in a format that addresses all reporting requirements. The Annual Report aligns with the project Theory of Change & associated Monitoring, Evaluation, Reporting and Learning (MERL) Framework. This Framework has been informed by the NOW Trust Deed, the NOW Trust and OCCs Brochure, the value dimensions of Moana Mahu¹ and practical experience in implementing the NOW Project since its establishment in 2016 [Niue Ocean Wide NOW](#).

This Annual Report includes a highlight of activities since the establishment and launch of the Trust in September 2023, and throughout 2024. Following this, Annual Impact Reporting will be done on a financial year (FY) basis, with Impact Stories shared throughout the year² to keep people up to date with all the excellent work being done on the ground. *A financial summary of the project and its investment area will be compiled each FY and reflected in the annual Performance Report. The first audited report of the NOW Trust has been successfully completed for year ending 30 June 2024 as a requirement under New Zealand Charitable Trust Law under which the NOW Trust is established.

The Annual Report and Performance Report constitute the annual reporting of the NOW Trust.

¹ The Value Dimensions of Niue Moana Mahu are broken down into example metrics and indicators that could support the Monitoring Reporting and Verification (MRV) of the accrual of these diverse values over time. An example of this is contained in Annex A and shows how development of the Trust, its activities and Results Framework are contributing to build this over time.

² Impact Stories and updates are shared through the NOW website www.niueoceanwide.com, social media and periodic outreach to sponsors who have signed up for updates.



4. 2023/2024 Impact



\$6,668,471 funding secured



18,431 OCC Sponsored



16 global and regional events



2x Global Awards recognising the OCC



NOW Trust Deed Registered



100% EEZ under sustainable management



40% (127,000km²) no-take area



14 RMACs established

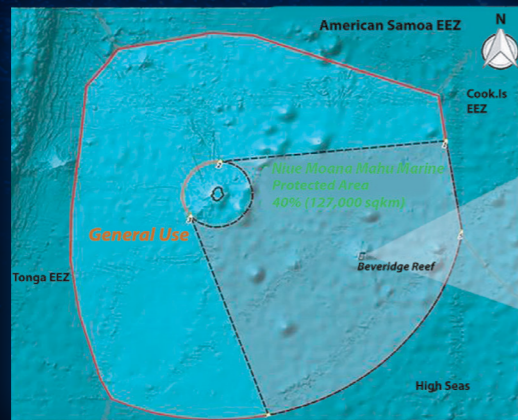


Biodiversity protected

10% increase in coral cover

60% increase in fish biomass

45% increase in top predators



First Parametric Risk Insurance product for Niue



8 training events on climate resilience and risk reduction

♀ 77 females ♂ 72 males



4 Interim NOW Secretariat established Local staff in place



2x Scientific surveys conducted (2016 and 2023) with reporting



\$320,000 for Conservation and resilient sustainable development grants



12 youth completed dive training



2 fully funded Education scholarships



Local NGO's supported in:

- Traditional Knowledge and Practice; and
- Marine Education Conservation Activities

Figure 1 - Now Project KPIs for 2023/2024



4.1 Establish and Strengthen Long Term Institutional Capability and Sustainable Financing



Key Performance Indicators

- \$6,668,471 secured funding (Trust capitalisation status)
- 18,431 OCC sponsored
- NOW Trust Deed Registered under New Zealand Charitable Trust Law (Trust Establishment)
- Interim NOW Trust Secretariat in place (4 x Local Staff)
- NOW Trust Administrator and Financial Investor established (Perpetual Guardian)
- Website and fundraising platform designed and launched (Outreach, fundraising and reporting)
- NOW Trust and OCC branding developed
- 2x Global Awards recognising the Ocean Conservation Commitment (OCC)
- 2x Comprehensive Scientific surveys completed in 2016 and 2023 with corresponding reports

NOW Project Legacy and Transition to the NOW Trust

Prior to the establishment of the NOW Trust, the NOW Project started in 2015 and was funded by Oceans 5, with in-kind contributions from the Government of Niue and Tofia Niue a local Non-Profit Organisation, and supported by National Geographic Pristine Seas. A key transition milestone from the NOW Project was the development and approval of the Sustainable Financing Strategy (SFS), developed by Tofia Niue in close consultation with the Government of Niue in 2020 (Figure 2). Since 2020, together with additional resourcing from the Blue Nature Alliance (BNA), this foundational support helped establish the sustainable finance mechanism and building trust and relationships with key stakeholders to support the establishment of the NOW Trust as the sustainable funding mechanism for Niue's Marine Spatial Management Plan (MSMP) including Niue Moana Mahu.

Whilst international partner support (BNA and CI in particular) was critical in enabling the development of the NOW Trust and OCCs, it is important to note and celebrate that this development has been lead in design by local Niuean's (indigenous people of Niue) and is thus infused with decades of practical experience with overcoming the challenges of project based interventions in the context of a small island developing state (SIDS). It is this core ingredient in the NOW Trust and OCCs that make this holistic approach to support lasting conservation and sustainable resilient development, achievable where other commitments have been short lived. It is also why Niue has, and continues to, share openly its approach with other Pacific Nations and the rest of the world.

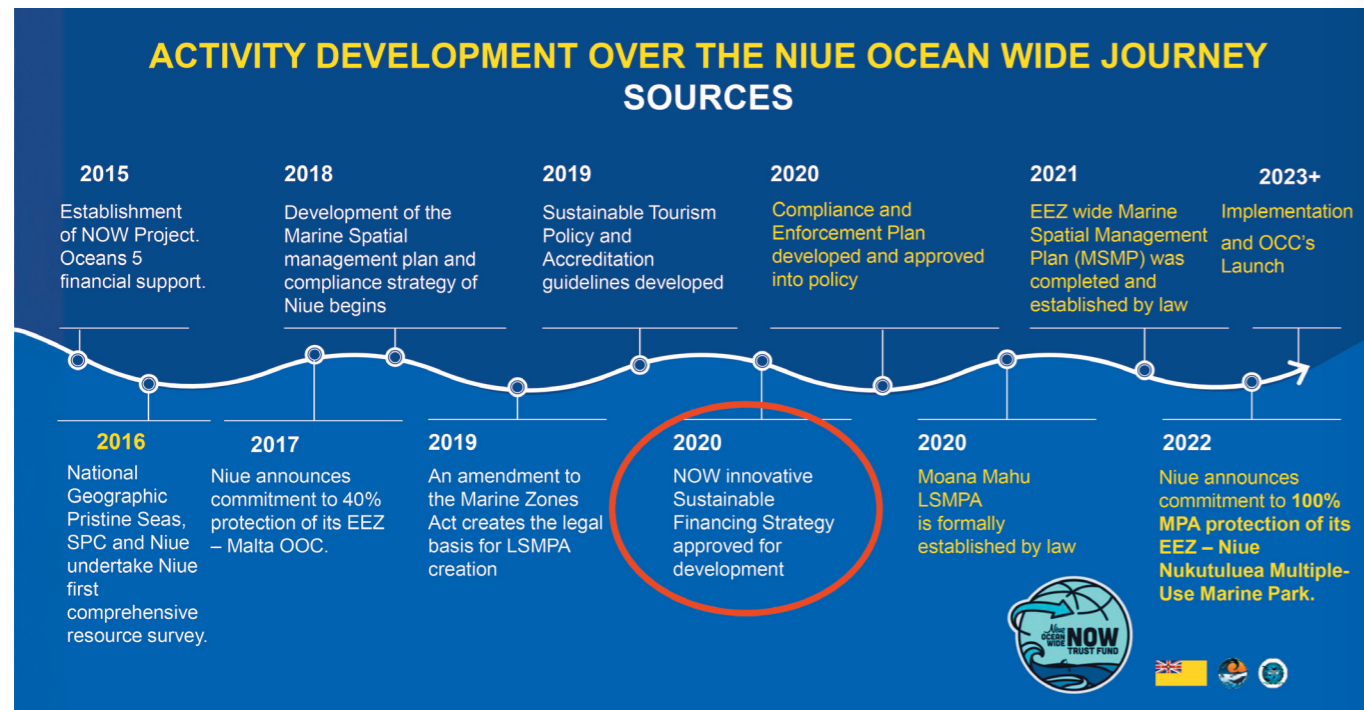


Figure 2: Activity development over the Niue ocean wide journey

The Trust (Deed) was informed by this seven years of partnership and implementation of the NOW Project through the public private partnership between the Government of Niue and Tofia Niue. The NOW Trust and its purpose, principles, capitalisation and focus are underpinned by this and over 30 years of lessons learned in project-based intervention experience, the details of which are available on the NOW Website www.niueoceanwide.com and summarised in a Brochure and Factsheet available on the website. The ground work established by the NOW Project was fundamental. These are outcomes from years of investment and work and allowed the Trust to “hit the ground running”. The NOW Trust’s first year activities have leveraged this previous work but will be ongoing for the journey of the Trust and Now initiative.

Objective

As part of the transition to operating under the NOW Trust, the project is focused on continuing to establish and strengthen the institutional capability of the NOW Project, Trust and Team. As well as growing and maintaining the sustainable financing for the project.

Key Activities and Outcomes

The following activities were identified as high priority:

- ✓ Establishment of the Trust
- ✓ Operationalisation of the Trust
- ✓ Capitalisation of the Trust

The majority of the activities identified in the NOW Project 10-Year Goals Framework were targeted at achieving these outcomes. Figure 3 illustrates a dashboard report showing significant progress against these.



Figure 3: Dashboard report on the progress of short term (1-3 years)goals from the NOW Project 10-Year Goals Framework



4.1.1 Trust Fund Establishment and Launched

NOW Team together with legal and financial support from BNA, CI, the Government of Niue, and Chapman Tripp (NZ legal firm) developed the NOW Trust Deed and associated Brochure and registered the NOW Trust under New Zealand Charitable Trust Law in September 2023. The NOW Trust was launched during UN Climate Week in New York September

2023. At the launch, verbal pledges of support for sponsoring OCCs were given including two large contributions of USD1million respectively from BNA and Conservation International to start the Trust, alongside the contribution by the Government of Niue, local individuals and businesses.

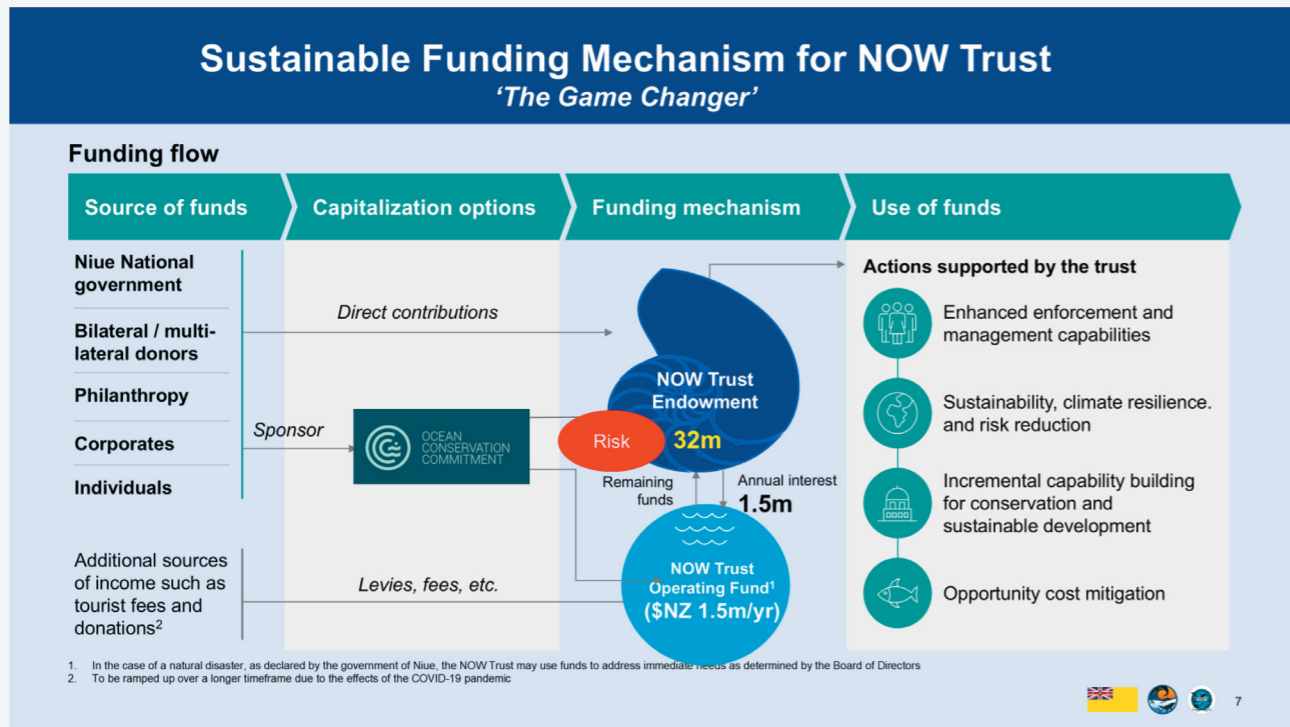


Figure 4: Establishment and launch of the NOW Trust at UN Climate Week in September 2023



Figure 5: Establishment and launch of the NOW Trust at UN Climate Week in September 2023 - (from left: Barry Gold, Matt Rand, Coral Pasi, Michael McGreevy, Jacinda Ardern, Sarah Elsaid, Emily Bennett, Chris Stone, Ashleigh McGovern, Dr. M. Sanjayan, Brendon Pasi)



4.1.2 World Class Innovation in Capitalisation Niue's Ocean Conservation Commitments Wins Prestigious International Award!!

A key part of the NOW Trust cost structure and envisaged capitalisation was the development of the innovative world-first nature-based financing instrument - Ocean Conservation Commitments (OCCs) and simultaneously launching the NOW Trust website and fundraising platform. The latter was a culmination of 18 months of work between the NOW Team and Tofia Niue with Partners BNA, in

collaboration with technical US-based developers Ripples Lab and DevDocs. This was not an easy journey with a few technical hiccups after launch, but by the end of 2023, the fundraising platform was operational. This platform provides a transparent ledger of all OCCs sponsored to date, the type of sponsor, their name (if they'd like) and where they come from.

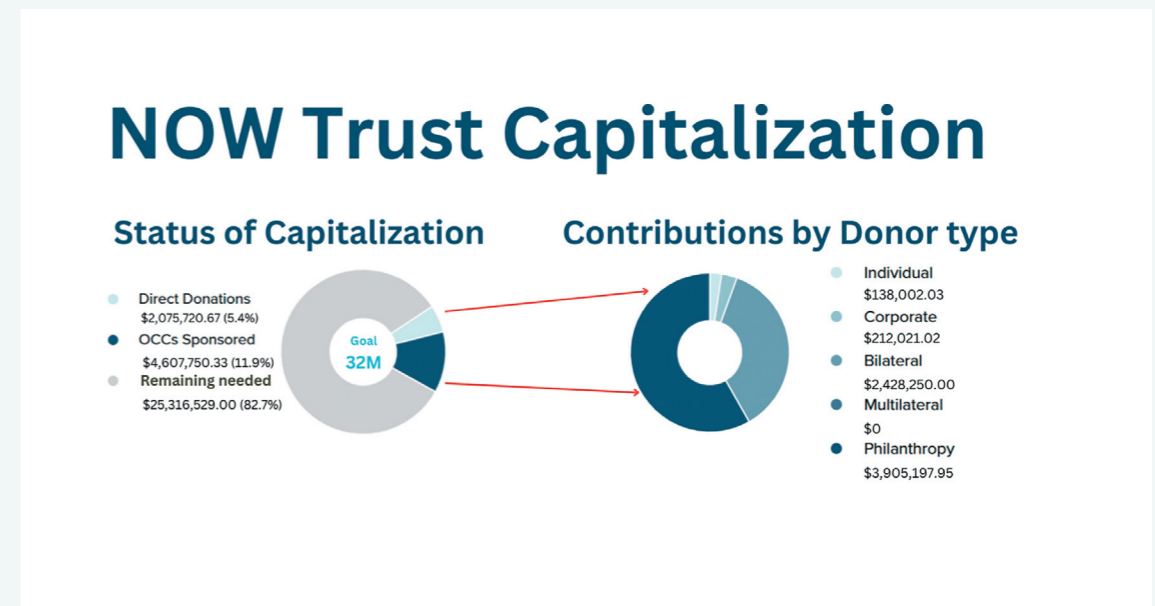


Figure 6: Summary of contributions to NOW Trust Capital

One of the most rewarding highlights for the team has been the success of the OCC development and proof of concept, putting Niue on the map as a world leader in innovative mechanisms for nature-based sustainable financing solutions. This has included winning two global awards. The OCC's are a concept developed by Indigenous Niuean's for Niue and potentially for many other small island developing states globally.





Figure 7: NOW Trust Wins Environmental Finance's Impact Initiative of the Year Award 2024. Environmental Finance focuses on sustainable investment, green finance, and environmental markets. Niue's Ocean Conservation Commitments mechanism is recognized once again to be a global leader in this space and offers a solution to scaling meaningful ocean conservation in a way that supports the resilience and livelihoods of communities in a sustainable way. NOW has consistently advocated globally for the OCC approach as an option for small island developing states who find themselves on the frontline of climate change impacts, while still supporting some of the largest healthy ocean ecosystems on the planet.



Figure 8: Amongst thousands of entries and qualifying 124 finalists, Niue's Ocean Conservation Commitments (OCCs) won the Nature category in the prestigious Fast Company World Changing Ideas Awards, followed by an honorary mention in the nature category.

Read more about this journey here: [Advocacy & Leadership – Niue Ocean Wide NOW](#)

4.2 Awareness and Global Advocacy

Key Performance Indicators

- 100% of Niue's population aware of and engaged in NOW Project
- 8 Global and Regional events
- 8 Local/National events



Objective

Core to the NOW Trust vision is the belief that effective ocean conservation and management requires regional and global engagement. From an operational perspective, the NOW team seeks to collaborate with regional and global stakeholders to coordinate conservation efforts and share outcomes. Furthermore, the NOW team hopes the knowledge and strategies developed for Niue can be replicated and scaled to other SIDS across the Pacific, providing incentives for conservation rather than being perceived as a cost burden.

Key Activities and Outcomes

- ✓ Supporting the broader dissemination of lessons learned from the OCC proof of concept such that this approach can be replicated elsewhere
- ✓ Fostering similar efforts regionally and internationally and providing leadership on a conservation and climate compatible future.
- ✓ Advocacy and promoting awareness of Niuean culture, heritage and natural assets



4.2.1 Global Advocacy on Ocean Climate Nexus

NOW has been represented by Trustee's, staff and local government partners at all levels advocating for ocean conservation that underpins a resilient sustainable blue economy and does not need to come with a disproportionate burden cost to SIDS. It leverages these efforts to simultaneously fundraise for the NOW Trust and NOW Initiative at numerous global meetings and summits - including UNFCCC COP28 and COP29, UNCBD COP15, the Global Nature Positive Summit, and many others - while also engaging in numerous bilateral meetings with regional governments, philanthropic organizations, corporations, and individuals.



Figure 9: The NOW team at COP 28 in Dubai - 2023



4.2.2 National Geographic Documentary – *Protecting Paradise, The Story of Niue*

Protecting Paradise, the Story of Niue, a documentary with National Geographic Pristine Seas on Niue’s ocean conservation leadership and journey was released on World Ocean Day, 8 June 2024 across the US first and later in other countries around the world. First showings in Niue drew huge public crowds and interest. The documentary captured Niue’s unique underwater ocean scape and ecosystems, it was a window for locals to see and appreciate how truly

magnificent their ‘taoga’ (traditional treasures) really are and why their protection is so important. The children of Niue Primary School were the most enthusiastic young viewers, always cheering on the whales when they appeared on screen.

Protecting Paradise Documentary is available on [Disney Plus](#) and [Hulu](#) streaming platforms.

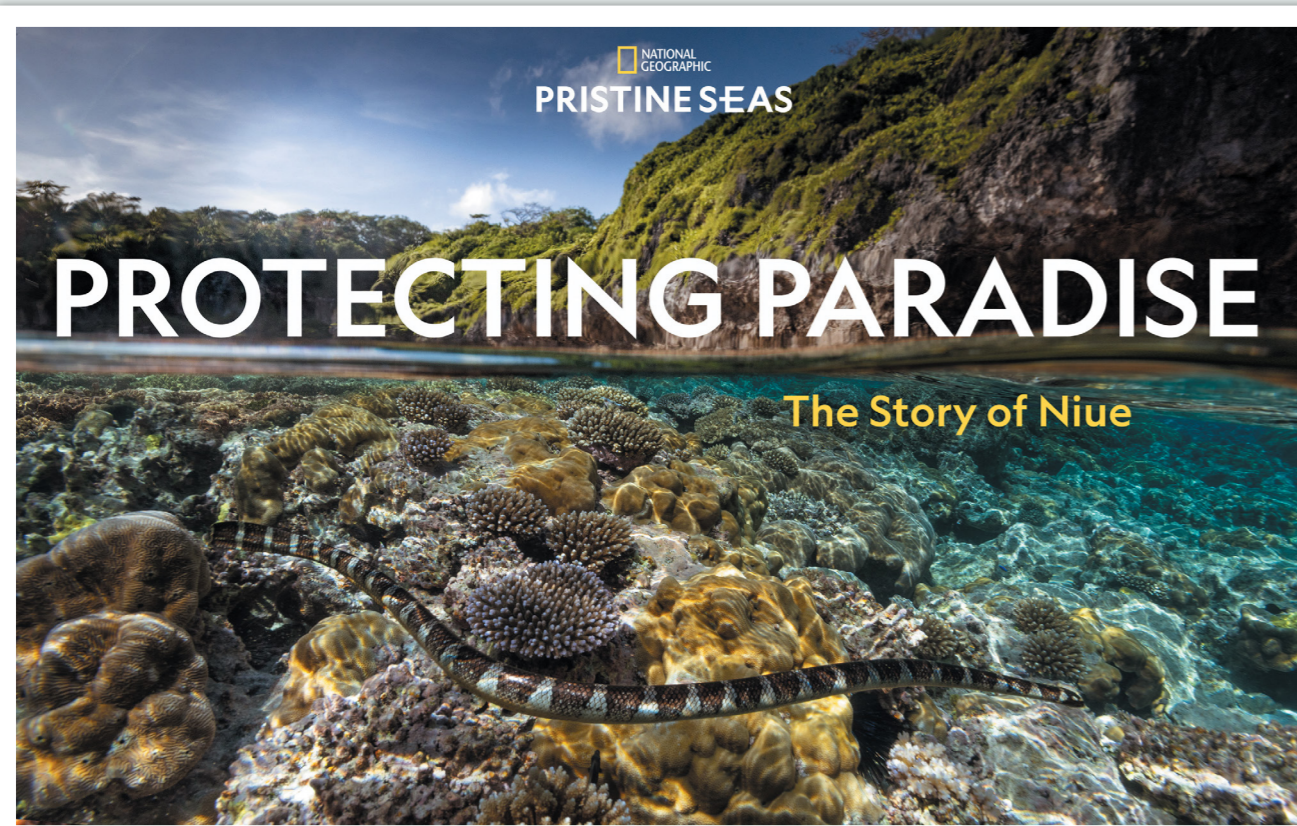


Figure 10: National Geographic’s *Protecting Paradise: The Story Of Niue* can be viewed on [Disney Plus](#) and [Hulu](#).

4.3 Enhanced Monitoring, Enforcement and Management Capabilities



Key Performance Indicators

- 100% Ocean area under sustainable management – Niue Nukutuluea Marine Park
- 40% (127,000km²) no-take zone, Niue Moana Mahu
- 14 village Resource Management Advisory Councils (RMACs) established and supported
- Management Effectiveness Evaluation Framework developed
- \$280,000 committed to RMAC Village Grants
- Biodiversity protected*, improvement in key ecosystem metrics since 2016 including:
 - 10% increase in coral cover
 - 60% increase in fish biomass
 - 45% increase in top predators

The development of the MRV system for NOW commitments, in particular Moana Mahu, is being developed over time and will draw from key performance indicators across the NOW Trust Results Framework, aligned with the value dimensions of Niue Moana Mahu. The MRV system will include metrics, processes and tools to assess ecological, socio-economic, climate change, security and area status and outcomes to ensure compliance and guide conservation and resilient blue economy efforts across Niue Nukutuluea Multiple-use Marine Park. The MRV will have methods and data/narrative collection plans aligned wherever possible to the NOW Trust Results and MEL Framework to ensure the NOW Trust stays focused on leveraging the value dimensions envisaged by the preservation of Niue Moana Mahu. The data and information collected from MRV surveys (once implemented and systematised) will inform future Impact Reports and vice versa; however, for this Impact Report, NOW has been able to report on the data and metrics collected across a range

of dimensions including as part of the Pristine Seas marine surveys (see below).

Many of these biodiversity data metrics, are also KPIs within the NOW Trust Results Framework. The MRV will be nested within this higher-level Framework (but will have greater granularity specific to some of the value dimensions of Moana Mahu over the long term and will be reflected in the KPIs for 5-10 year outcomes). Many of the KPIs reported in the Impact Report (both biodiversity and others social indicators) are ones that had been proposed in the NOW Brochure (Exhibit 9) for possible use. These are highlighted in Annex A. The selection and use of metrics for the MRV are still in development, with additional ones reported here that will also be included. The NOW team continue to progress developing the MRV through the possible application of expanded Ocean Accounting and the implementation of a Management Effectiveness Evaluation Framework.

* The NOW Project is very clear on what it is able to influence and what it cannot. Importantly, climate change presents an existential threat to Niue (and other Pacific Island countries) and will impact things like biodiversity, reef health, fish abundance which is outside the Trusts control. For this reason, the Now Trust will still reference ecosystem health as a KPI, (which will be monitored under the Maona Mahu MRV and associated monitoring) but will not be held accountable for this. Instead, the NOW Project will focus on activities and outcomes that help build reef and community resilience like protected area management, compliance and enforcement, capacity building, preservation of traditional knowledge and culture and intergenerational equity.

Objective

The Government of Niue and Niuean people are effectively managing and monitoring its Niue Nukutulua Multiple-use Marine Park and related policies and plans. The NOW Trust will achieve this by enhancing and supporting marine monitoring and enforcement efforts. This includes integrating local villages as stewards responsible for the protection of their marine and coastal environments. The MEEF will help measure the overall effectiveness of Niue's management interventions.

Key Activities and Outcomes

- ✓ Build partnerships and capacity within relevant local entities including Government Ministries
- ✓ Partnerships and capacity are being strengthened
- ✓ Training and capacity building in compliance and enforcement
- ✓ Marine ecosystem/species monitoring of resources within Moana Mahu and the Multiple Use MSP.
- ✓ Development of MRV
- ✓ Improved management & enforcement capacity of Moana Mahu & MSP
- ✓ Effective resourcing of village sustainable resource use management plans
- ✓ Integration of Niuean culture and traditional knowledge into ocean management policy
- ✓ Development of a Management Effectiveness Evaluation Framework (MEEF)

4.3.1 Comprehensive Scientific Surveys

In July 2023, NOW and the government of Niue, in collaboration with NGPS, conducted their second three-week scientific expedition covering Niue, Beveridge Reef and, for the first time, Antiope Seamount. This followed nearly seven years since the first expedition and provided great scientific comparison against the baseline set in 2016. The data showed that coral cover had increased by ~10% during this time and total fish biomass increased by 60%, while sharks and other top predators (e.g., jacks, snappers, groupers) increased by 45% since protection.

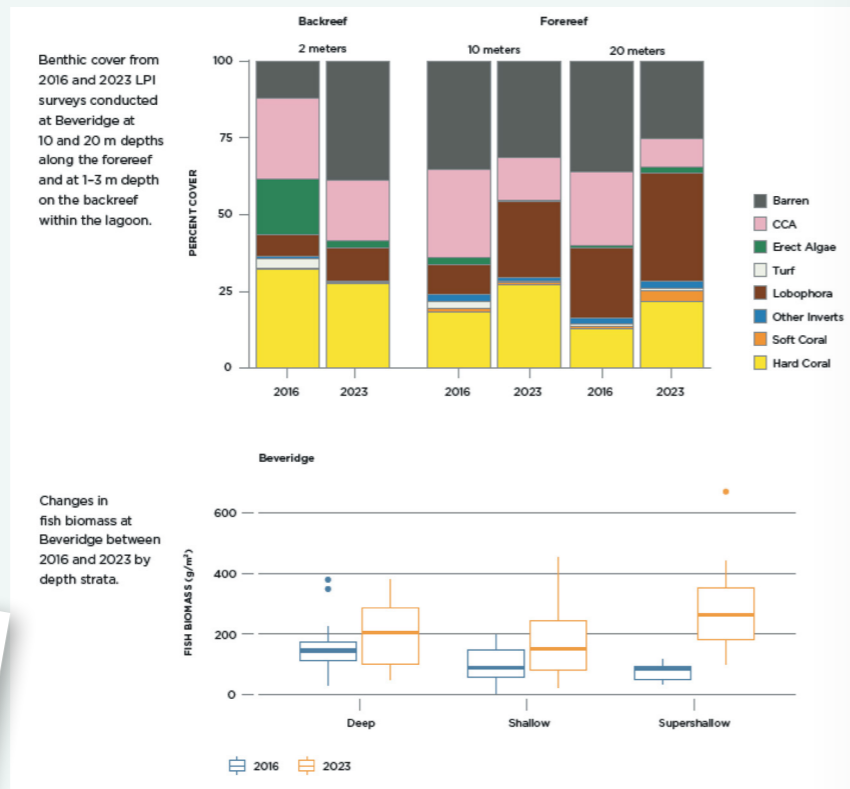


Figure 11: Data from Pristine Seas comprehensive scientific surveys showing increase in coral cover and fish biomass since 2016



4.3.2 NOW Teams Up with NZ Navy to Enhance Monitoring, Control and Surveillance

NZ Navy HMNZS Manawanui teamed up with the NOW Project to assist with deployment of aids for navigation and monitoring Niue's Marine Protected Area (MPA). NOW representatives, together with five other Niuean authorities from government departments, ventured approximately 120 nautical miles out to sea for an inspection at Beveridge Reef.

The objective of this mission was to enhance safety for the reef by working towards navigational aid installation. The Nav aids provide a potential platform for MCS equipment which will assist with surveillance of reef. The trip provided and opportunity for NZ Navy to demonstrate how to undertake surveillance of area, and also provided and opportunity to strengthen relationships and future partnership for surveillance in future.



Figure 12: NOW Team partners with the NZ Navy

4.3.3 Building Capacity

The NOW Trust recognises the important role stakeholders hold in progressing the crucial work and goals of the Trust. NOW has been able to facilitate workshops and consultations this year, engaging groups and entities on the island which included government departments, local government bodies, NGOs, non-profit organizations, community groups and re- mobilizing the 14 village RMACs that were set up for every village on the island under the previous project funding.

During the last consultation with the Village Council groups and RMACs, NOW Trust announced that a total of \$280k has been committed to all villages to facilitate implementation activities of the village Marine Resource Management Plans. These activities would be undertaken in collaboration with Niue Department of Agriculture, Forestry & Fisheries - DAFF under the co-management arrangement. The allocated funding will continue for the next three years with a view to continue over the next 20 years, and hopefully in perpetuity.



Figure 13: Resource Management Advisory Committee training workshop in 2024 with local communities from all 14 villages of Niue



4.4 Sustainability, Climate Resilience, and Risk Reduction

Key Performance Indicators



- De-risking sustainable blue economy - First Parametric Risk Insurance coverage for Niue and Beveridge Reef
- NDCs Updated with NOW commitments
- Dedicated capacity to leverage resilient blue economy - First dedicated Commerce & Ocean Conservation officer position supported in Chamber of Commerce Capacity building
- 8 events/trainings around resource management/climate resilience and risk reduction
 - 77 females
 - 72 males

Objective

A key barrier to Niue realizing the benefits of a high value sustainable environment based eco-tourism industry underpinned by its conservation efforts, is the risk associated with severe weather events, which will continue to increase in frequency and intensity due to climate change. NOW aims to support the growth of sustainable businesses, building on the value of our blue ocean assets under conservation and de-risk this investment space at the same time. Funding for risk reduction helps to build resilience and reduce recovery time for communities and businesses following disasters. Thus helping to de-risk investment and decrease recovery time.

In time the NOW project will support the Government of Niue to work with Niuean business owners to implement and scale up sustainable practices, to assist them to leverage higher returns on sustainable products and services, while also reducing risk.

Key Activities and Outcomes

- ✓ Partnerships and capacity are being strengthened
- ✓ Funding for local businesses and stakeholders in sustainability
- ✓ Building capacity of business to become sustainable (Training)
- ✓ Establishment of accreditation - sustainable business
- ✓ Updating sustainable tourism policy and guidelines
- ✓ Increased resilience (through reduced risk)
- ✓ Establishment of derisking instruments (insurance and concessional grants)
- ✓ Updating Niue's NDCs with ocean commitments



4.4.1 First Parametric Insurance Coverage for Niue

NOW partnered with the Government of Niue and the Pacific Catastrophic Risk Insurance Company (PICRIC) company to develop and fund Niue's first ever Parametric insurance coverage for cyclones. Cyclones are one of the biggest threats to Niue's ocean resources and environment and are predicted to increase in intensity and frequency as a result of climate change.

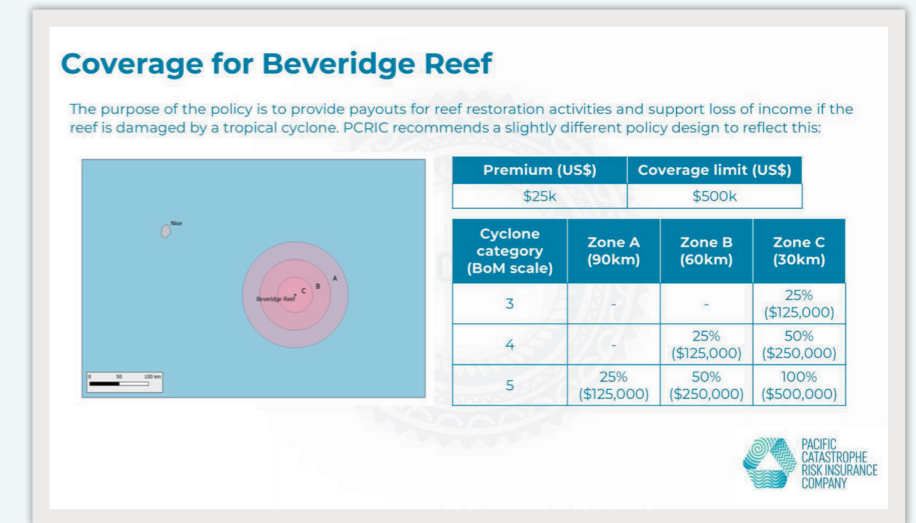


Figure 14: Summary of PCRIC Parametric Insurance for Niue

4.4.2 Niue's Updated Nationally Determined Contributions (NDCs)

Niue launched its updated Nationally Determined Contributions (NDCs) at COP29 in Baku. An ambitious and forward-thinking blueprint that goes beyond emissions reduction. The NDCs strategically integrate ecosystem protection, marine conservation, and climate adaptation to strengthen island resilience. The Niue and Ocean Wide Trust - Ocean Conservation Commitments (OCCs) continue to set a regional benchmark topping the charts in sustainable management of 100% Niue's EEZ - Nukutuluea Multipurpose Marine Park and Niue Moana Mahu MPA. On the global scale the OCCs is the first of its kind and only type of nature based credit that has sold to date. It has proven itself in the market and is making massive waves by impact. Emphasizing traditional knowledge and cultural alignment, this wholistic approach reinforces Niue's leadership in sustainable ocean stewardship and the global blue economy. <https://youtu.be/5KVOUyqzAHw>



Figure 15: Launch of Niue's updated NDCs at COP29 - (from left: Haden Talagi, Tagaloa Cooper, Hon. Dalton Tagelagi, Coral Pasisi, Hon. Mona Ainu'u)

4.5 Incremental Capability for Conservation and Sustainable Development

Key Performance Indicators



- Support provided to local NGO's and associations, supporting
 - Traditional knowledge and practice
 - Marine education conservation activities
- Conservation and resilient sustainable development grants established for Niue
 - \$320,000 committed
- Building the capacity of youth to engage in and lead ocean conservation and development efforts
 - 12 youth attending dive training
 - 12 discover diving and 6 certified divers
- Two fully funded tertiary education scholarships provided for Niuean children

Objective

To ensure the continued appreciation and protection of Niue's oceans for the next thousand years, the NOW team aims to educate community members and the next generation of Niuean children and leaders in the value of the oceans and its deep ties to Niue's cultural traditions and practices. The NOW team work with the Government of Niue and local organisations to build local capacity to support conservation, resilience, and sustainable development over the long term.

Key Activities and Outcomes

- ✓ Funding sustainable development projects within communities
- ✓ Building capacity of communities to develop sustainable business opportunities
- ✓ Supporting Niuean youth to be aware and empowered, and effectively participating in sustainable ocean management
- ✓ Supporting education and scholarships
- ✓ Cross-generational education and training in marine conservation and cultural tradition
- ✓ Promoting ocean conservation and custodianship in schools
- ✓ Grant support to Niue Island Fishing Association (NIFA) and Niue Vaka Association (Matakau Vaka)



4.5.1 Supporting Traditional Practice Through Vaka (Canoe) Building

Traditional vaka (canoe) building is more than craftsmanship - it's a living connection to our ancestors, a testament to sustainable living, and an integral part of Niue's ocean heritage. Using locally sourced materials, vaka builders play a vital role in preserving cultural knowledge while protecting our natural resources.

The Niue Ocean Wide Project support these traditions, encouraging the sharing of skills that strengthen our deep relationship with the ocean. By embracing vaka-building practices, Niuean's honour their past, uphold their cultural values and traditional knowledge to safeguard their future.



Figure 16: Traditional vaka (canoe) building with local Master canoe builder, Taumafai Fuhiniu

4.5.2 Passing On Ocean Related Traditional Knowledge at Primary School

NOW supports the maintenance of traditional knowledge in the school through grants that support ocean stewardship and enable more talatalai (traditional craft) lessons related to ocean taoga (culture and traditional knowledge). This included the process making traditional fishing hooks and sinkers and the practice and processes involved. Niue Primary School, is passionate about passing traditional knowledge to their students through local craft teacher Jackson Hekesi and NOW is proud to support and help document this important work.



Figure 17: Boys craft teacher, Jackson Hekesi, passing on ocean related traditional knowledge at primary school through the craft of traditional fish hooks

For video Impact Story please click this link https://www.youtube.com/watch?v=oSGNC_i9DqE





4.5.3 Teaching Future Ocean Leaders to Dive

As part of building Niue's responsible future ocean custodians, NOW partnered with a local dive company, Niue Blue, to support six Niue High School Students to undertake Padi Dive Courses. The investment focused on supporting students who had interests in the ocean. The course provided the students the opportunity to see what NOW is protecting and the opportunity and engage them in the idea of possible career paths in the marine space. <https://youtu.be/9ifO1jFMpJU>




Figure 18: Youth from Niue High School and the future leaders of our ocean participating in certified PADI dive courses in Niue



4.5.4 NOW Supports Fully Funded Scholarships

The NOW Trust announced it's first fully funded scholarships in December this year, to the value of NZD\$35,000 and invited interested individuals who were enthusiastic about pursuing a career in marine and ocean conservation to apply. This scholarship, fully funded by Niue, was a first of its kind and offered a great opportunity for students

and individuals hoping to pursue a higher education, or technical and vocational training. This is often beyond the affordability for most families in Niue. This is part of NOW's broader efforts and priorities to collaborate with educators and build up the youth of Niue as the future custodians of Niue's marine resources.



NOW TRUST ANNUAL SCHOLARSHIP AWARD

The Niue & Ocean Wide Trust are offering its first ever FULL Scholarship Award for 2025

Eligible Applicants:
 Permanent resident of Niue.
 School leaver or existing students between 18 and 35 at the time of application.
 Have a strong interest in marine and terrestrial conservation and select their area of study accordingly.
 Must return to Niue at the completion of their studies for a minimum of 2 years to utilise their skills.

All interested applicants to apply to the NOW Trust Annual Scholarship Award.

Email: niueoceanwide01@gmail.com & niueoceanwide@gmail.com
 Attention: Trust Secretariat

Applications to include:

- Covering Letter of Interest
- NCEA performance Report level 1,2 & 3
- Current CV (if working)
- References from the most recent teacher/s &/or employer

DEADLINES FOR APPLICATIONS — COB- 22nd DECEMBER 2024

Figure 19: NOW Trust Annual Scholarship Award

5. Priorities for 2025

Since the establishment of the Trust in September 2023, the NOW Project has laid solid foundations by establishing and strengthening long term institutional capability within the NOW Team and partnership, as well as the sustainable financing mechanism. Additionally, there has been good progress in the other investment areas, as outlined above, including towards the four investment areas below.

- 1 Long term institutional capability and sustainable financing
- 2 Enhanced monitoring and enforcement and management capabilities within the Government of Niue, as well as village RMACs
- 3 Improved, sustainability, climate resilience and risk reduction for Niuean business and communities
- 4 Incremental capability for conservation and sustainable development with Niuean youth and communities

The focus for the next year will be about building on these foundations, implementing conceptual projects and scaling up work already completed.

Although the Trust is established, there will be continued focus on building the Trust Team, securing additional funding, as well as strengthening existing partnerships and establishing new ones with regional bodies and organisations.

Supporting the roll out of Village RMACs grants, strengthening business systems for effective running of the Trust and grantee's and strengthening reporting, data and monitoring will be a focus in 2025. The NOW Trust and related NOW initiatives and partners will continue to be global leaders and advocates for the protection of the ocean and a sustainable future for the Pacific.



Annex A - MRV

Exhibit 9

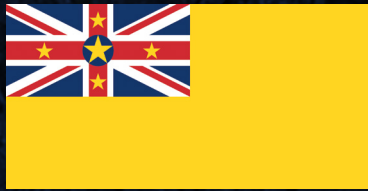
Initial Outcome Metrics to be Reported¹

Category		Examples	Traceability Through MRV	
Threatened	# of impacted	Vulnerable and endangered species based on global data sites	●	
		Protection of only habitat of the Katuali, or flat-tail snake	●	
		Conservation of potential grey shark breeding area	●	
		Preservation of Humpback whale breeding and birthing ground	●	
Unique	Qualitative	Continuation of conservation actions across 6 bioregions	●	
		Continued habitat protection across 15 seamounts	●	
Unique	Quantification of biodiversity	Number of species / km ² (species abundance)	●	
		Tons/km ² biomass (stabilization or increase)	●	
Ecosystem	Index	Rank of ocean's health across 8 goals via Ocean Health Index	●	
		Microplastic presence in water column and seafloor sediment (e.g., % samples with plastics, or pieces per liter)	●	
		# kgs of ocean waste removed from ocean or shoreline annually	●	
Regional		Ocean acidification, warming, and/or deoxygenation	●	
Sequestration &	Niue specific tCO ₂ e	tCO ₂ sequestered estimate blue carbon	●	
		tCO ₂ emissions avoided from reduced maritime traffic in Moana Mahu (e.g., historic commercial fishing fleets)	●	
		Benefits of nature-based solutions (e.g., reduced pressure on reef systems, fish stocks, avoided runoff)	●	
Sequestration &	Quantification of resilience efforts	#, area, species protection of food security hot spots (Beveridge Reef)	●	
		Sustainable fishing indicators	# Marine days/events applying sustainable practice guidelines	●
Sequestration &	Revenue	Area protected to ensure access rights for small-scale fishers	●	
		Comparative value return on fish to Niue through sustainable versus industrial commercial fishing (NZ\$/kg fish)	●	
Sustainable		Direct contribution of tourists to conservation (e.g., effort & \$)	●	
		# businesses accredited to sustainable business standards	●	
Sustainable		# employed by sustainable tourism	●	
		Education and cultural practice &	# of people trained/educated in ocean conservation & cultural value	●
Education and cultural practice &		# of knowledge products unique to Niue developed & shared	●	
		Area under	Km ²	127,000 km ² LSMPA
318,018 km ² Niue Nukutuluea Multiple-use Marine Park	●			
Portion protected or managed	100% of EEZ marine park protected			●
	40% of EEZ in protected no-take zone	●		
	\$ value of contribution to 30by30 goal	●		
Monitoring, control,	Years of protection	20 years	●	
		Illegal, Unreported, Unregulated (IUU)	# of reported IUU incidents	●
			# efforts to combat IUU	●
Monitoring, control,	Dedicated resources to MCS	Expenditure for MSC activities (NZ\$)	●	
		# of air and sea surveillance missions	●	
		# and type of other methods deployed – e.g. remote sensing	●	

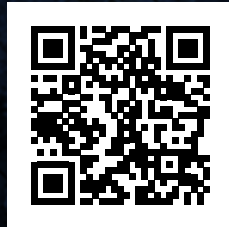
Yellow highlight: Potential MRV metrics reported in 2024 Impact Report.

¹ Outcome metrics expected to evolve over time

- Reported year 1
- Clear-path to reporting in near term
- Required meaningful capability building to measure
- No clear path to measurement at present



www.niueoceanwide.com



LEARN MORE